

# Installing GFI LANguard Network Security Scanner

---

## System Requirements

The installation of GFI LANguard Network Security Scanner requires the following:

- Windows 2000/2003 or Windows XP
- Internet Explorer 5.1 or higher
- Client for Microsoft Networks must be installed.
- NO Personal Firewall software or the Windows XP Internet Connection Firewall can be running while doing scans. It can block functionality of GFI LANguard N.S.S.

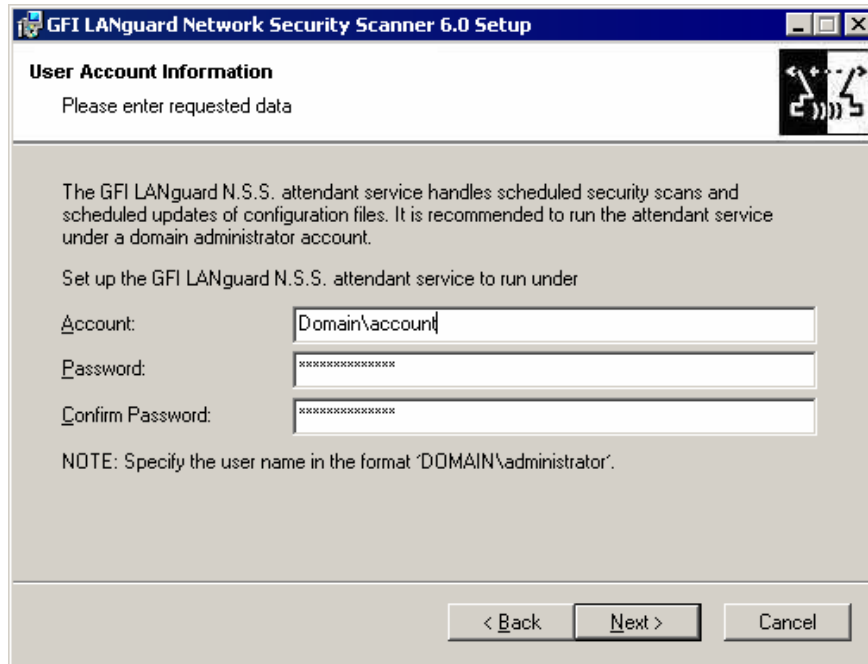
NOTE: Details on how to configure your active directory policies to support scanning of/from computers running Windows XP with service pack 2 can be found at <http://kbase.gfi.com/showarticle.asp?id=KBID002177>.

- To deploy patches on remote machines you need to have administrator privileges

---

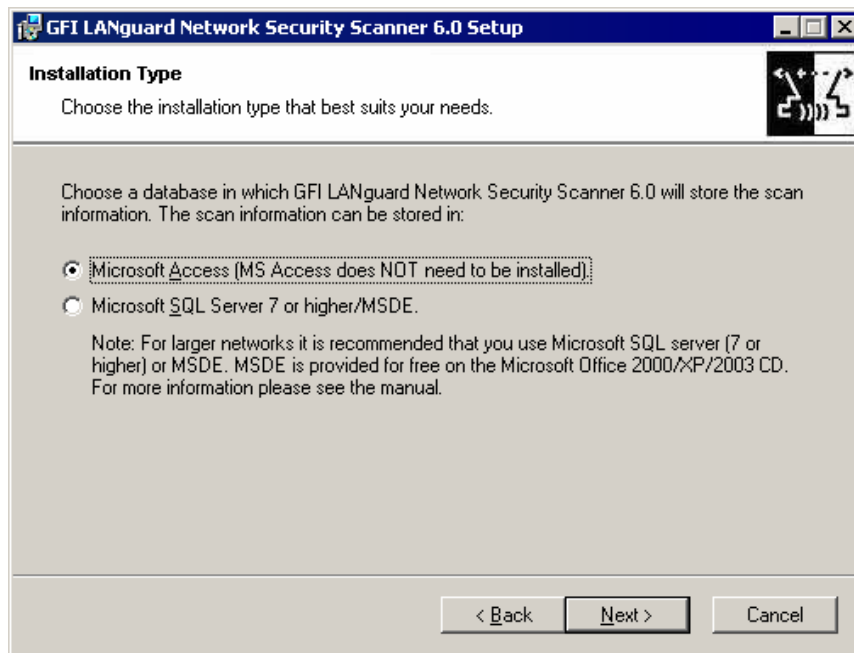
## Installation Procedure

1. Run the LANguard Network Security Scanner setup program by double clicking on the languardnss6.exe file. Confirm that you wish to install GFI LANguard N.S.S. The set-up wizard will start. Click **Next**.
2. After reading the License agreement dialog box, click **Yes** to accept the agreement and continue the installation.
3. Setup will ask you for user information and License key



*Specify domain administrator credentials or use local system account*

4. Setup will ask you for domain administrator credentials which are used by the LANguard N.S.S Attendant service (which runs scheduled scans). Enter the necessary credentials and click **Next**.



*Choose database back-end*

5. Setup will ask you to choose the database backend for the GFI LANguard N.S.S database. Choose between Microsoft Access or Microsoft SQL Server/MSDE and click **Next**.

NOTE: SQL Server/MSDE must be installed in mixed mode or SQL server authentication mode. NT authentication mode only is not supported.

6. If you selected Microsoft SQL Server/MSDE as a database backend, you will be asked for the SQL credentials to use to log on to the database. Click **Next** to continue.
7. Setup will ask you for an administrator email address and your mail server name. These settings will be used for sending administrative alerts.
8. Choose the destination location for GFI LANguard N.S.S. and click **Next**. GFI LANguard N.S.S. will need approximately 40 MB of free hard disk space.
9. After GFI LANguard N.S.S. has been installed, you can run GFI LANguard Network Security Scanner from the start menu.

---

## Entering your License key after installation

If you have purchased GFI LANguard N.S.S., you can enter your License key in the General > Licensing node.

If you are evaluating GFI LANguard N.S.S., it will time out after 60 days (with evaluation key). If you then decide to purchase GFI LANguard N.S.S., you can just enter the License key here without having to re-install.

You must license GFI LANguard N.S.S. for the number of machines that you wish to scan, and for the number of machines that you wish to run it on. If you have 3 administrators using GFI LANguard N.S.S. then you have to buy 3 licenses.

Entering the License key should not be confused with the process of registering your company details on our website. This is important, since it allows us to give you support and notify you of important product news. Register on:

<http://www.gfi.com/pages/regfrm.htm>

Note: To find out how to buy GFI LANguard N.S.S., follow the General > How to purchase node.